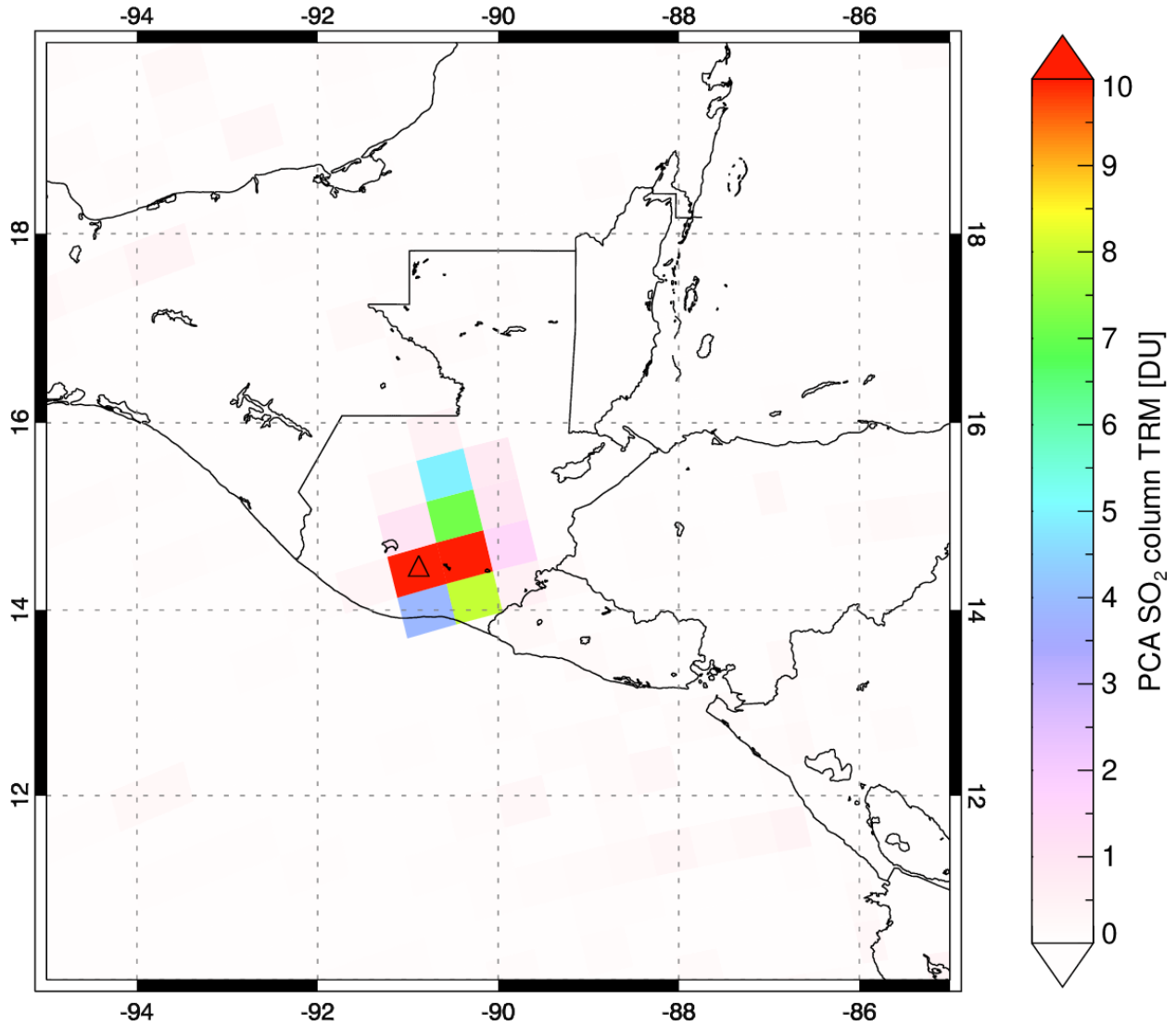


Suomi NPP/OMPS - 06/03/2018 19:02-19:06 UT - Orbit 34198

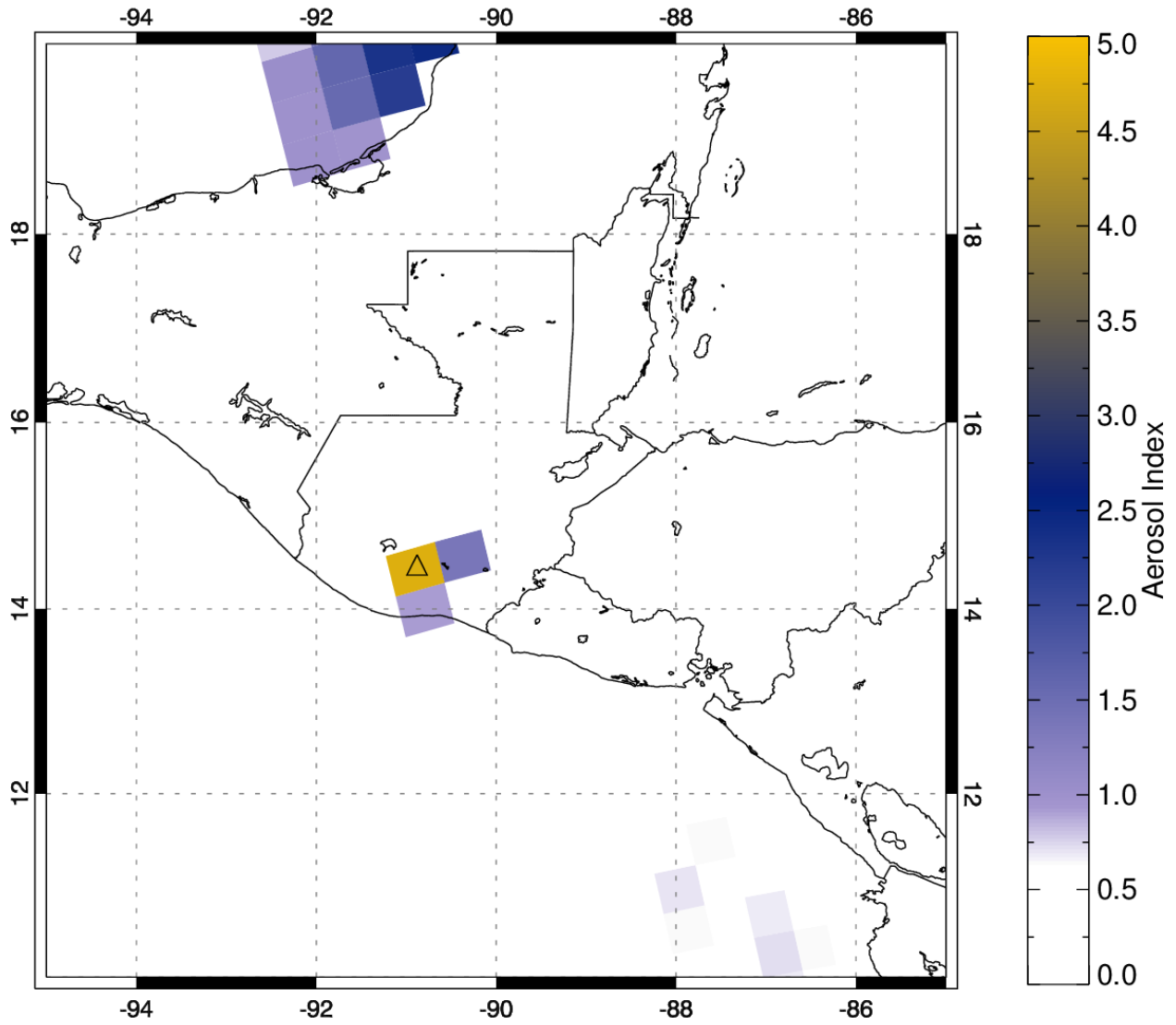
SO₂ mass: 5.30 kt; Area: 138034 km²; SO₂ max: 19.21 DU at lon: -90.89 lat: 14.43 ; 19:04UTC



From: NASA - Global Sulfur Dioxide Monitoring Home Page

<https://so2.gsfc.nasa.gov/index.html>

Suomi NPP/OMPS - 06/03/2018 19:02-19:06 UT - Orbit 34198



From: NASA - Global Sulfur Dioxide Monitoring Home Page

<https://so2.gsfc.nasa.gov/index.html>

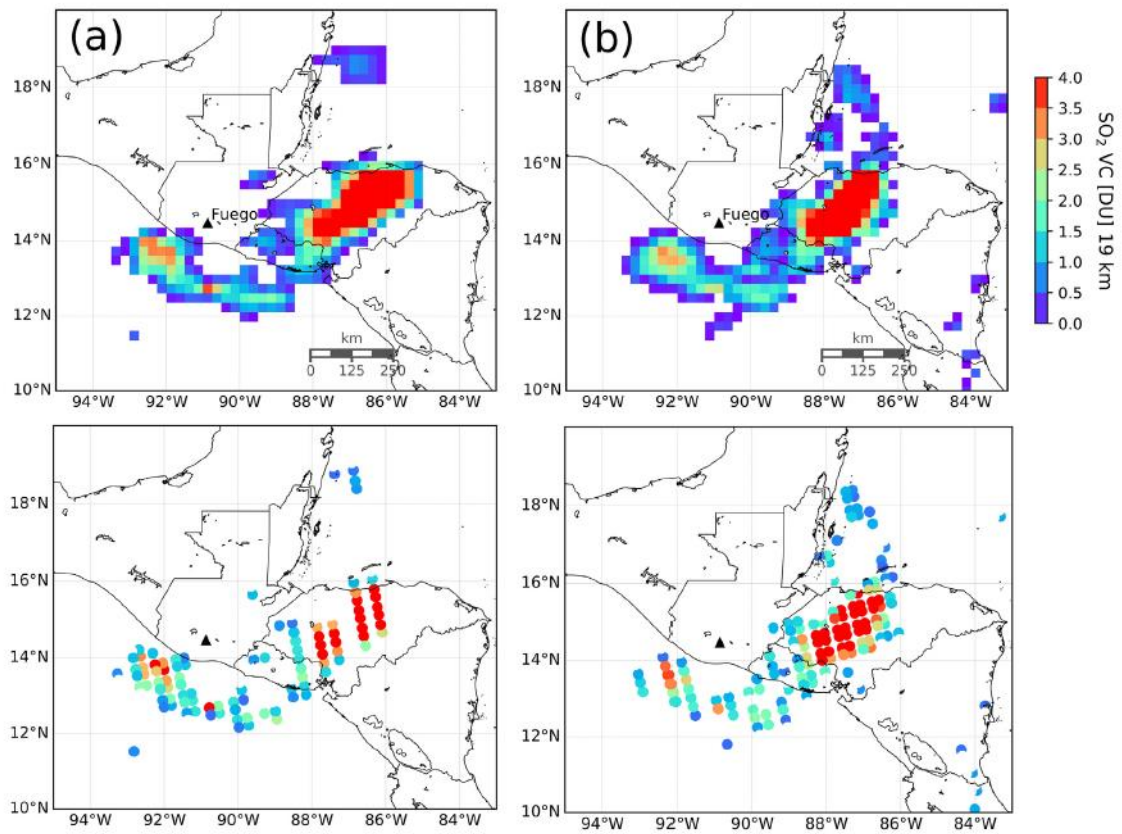


Fig. 2. SO_2 VCs from IASI assuming SO_2 located at 19 km asl, indicating a dispersing SO_2 plume drifting towards Southeast. (a) SO_2 as detected by IASI on board MetOp-A on 4 June 2018 at about 03:30 UTC. VCs are interpolated at 25 km grid used for PlumeTraj analysis. Corresponding VCs at IASI native spatial resolution are shown below. (b) Same as (a) but for IASI MetOp-B measurements, acquisition time 4 June 2018 at about 03:00 UTC. DU indicates Dobson units ($1\text{DU} = 0.02848\text{ g SO}_2\text{ m}^{-2}$).